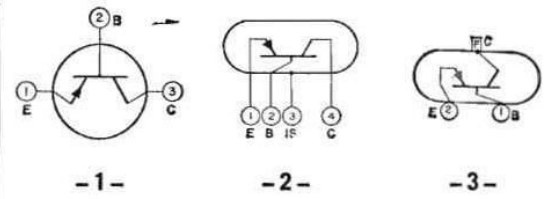


RCA Type	Terminal-Correction Diagram*	Out-line	MAXIMUM RATINGS				CHARACTERISTICS		Maximum Operating Temperature (C°)	Can be replaced by RCA type
			V <sub>CB</sub> (volts)	V <sub>EB</sub> (volts)	I <sub>O</sub> (amperes)	P <sub>T</sub> (watts)	Min. h <sub>FE</sub>	I <sub>CB</sub> (μa)		
2N373	2	7	-25	-0.5	-0.010	0.080	60	-8	71	2N1638
2N374	2	7	-25	-0.5	-0.010	0.080	60	-8	71	2N1631
2N456	3	26	-40	-20	-5	50	52	-	95	2N2869
2N457	3	26	-60	-20	-5	50	52	-	95	2N2869
2N497	5	6	60	8	-	4	12	10	200	-
2N544	2	7	-18	-1	-0.010	0.080	60	-4	71	2N1638
2N561	3	26	-80	-60	-10	50	75	-	100	2N2869
2N578	1	9	-20	-12	-0.400	0.120	10	-5	71	2N412
2N579	1	9	-20	-12	-0.400	0.120	20	-5	71	2N412
2N580	1	9	-20	-12	-0.400	0.120	30	-5	71	2N412

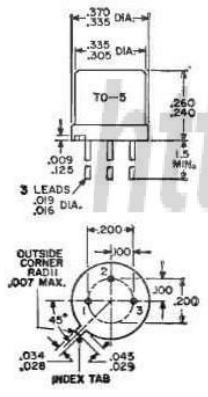
**TERMINAL-CONNECTION DIAGRAMS FOR DISCONTINUED TRANSISTORS**



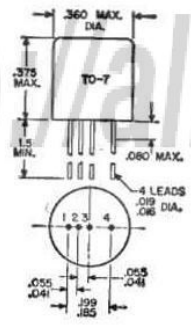
- 1 -

- 2 -

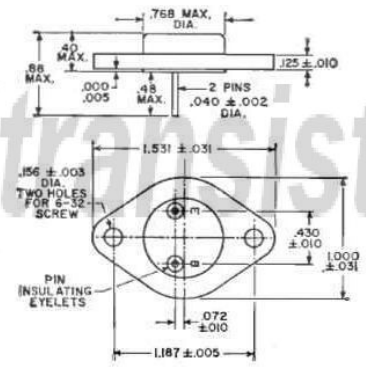
- 3 -



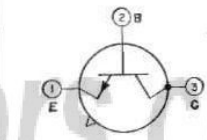
- 6 -



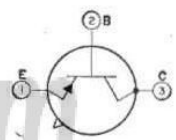
- 7 -



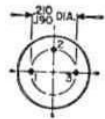
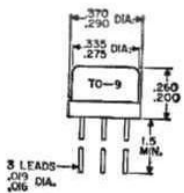
- 26 -



- 5 -



- 6 -



- 9 -

**Outlines**

Dimensions in inches